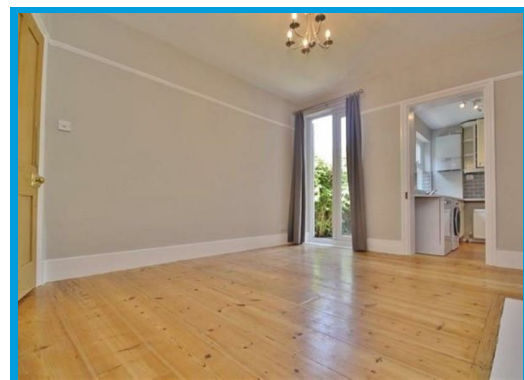
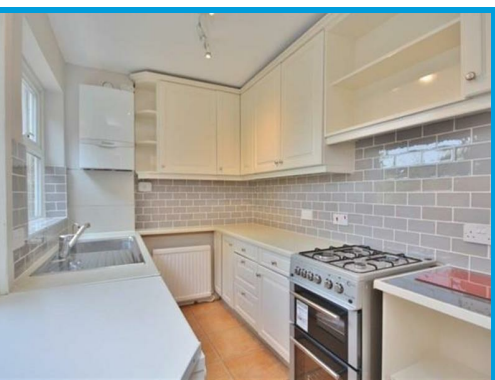




Markenfield Road, Guildford, Surrey GU1 4PD

£3,000 PCM

**** STUDENT ACCOMODATION 2026-2027 ACADEMIC YEAR**** Located in the heart of Guildford town centre and within a very short distance to Guildford mainline station, this beautifully presented four bedroom house offers spacious accommodation throughout.



Description

**** GET A FREE £100 NANDOS VOUCHER IF YOU TAKE THIS PROPERTY THROUGH CAVENDERS**** Arranged over 4 floors and presented in excellent order throughout, this spacious home is located in the town centre and within moments to Guildford mainline train station.

On the ground floor the accommodation comprises an entrance hall leading to the dining with wood flooring, an open plan kitchen with appliances and a separate lounge with feature fireplace.

The first floor comprises two double bedrooms with built in storage and a family bathroom.

On the top floor there is the master bedroom with en suite shower room and a double built in wardrobe.

The lower ground floor comprises the 4th bedroom with wood effect flooring.

Further features include a panel fence enclosed garden with patio and mature borders and a garage.



Whilst every attempt has been made to ensure the accuracy of the floorplan contained here, measurements of doors, windows, rooms and any other items are approximate and no responsibility is taken for any error, omission or mis-statement. This plan is for illustrative purposes only and should be used as such by any prospective purchaser. The services, systems and appliances shown have not been tested and no guarantee as to their operability or efficiency can be given.
Made with Metropix ©2022

